

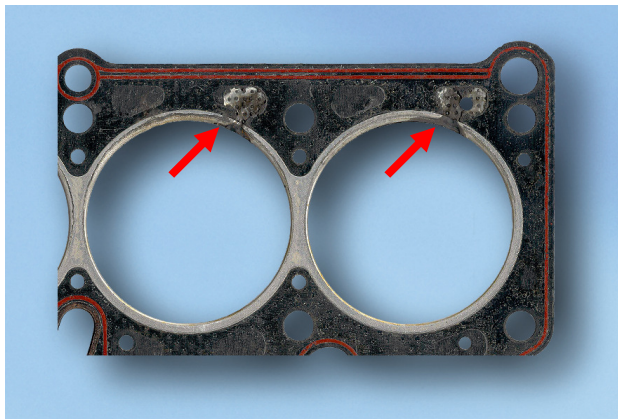
Tips from the gasket expert

Engine failure – is the cylinder head gasket to blame?

Failure of the cylinder head gasket due to knock damage

Damage symptoms:

Dents and deformations can be seen clearly on the metal combustion chamber eyelets. Melting of the eyelet and the soft material. The metal on the combustion chamber eyelet is usually bright in this area, and the soft material shows signs of scorching.



Cause:

Engine not tuned (pre-ignition) as specified by the manufacturer. Thereby the uncontrolled combustion generates shock waves with extremely high pressure and temperatures, overstressing the engine components. Damage can be found most commonly on pistons and the cylinder head gasket.

Other possible causes:

- Poor fuel quality (insufficient octane rating).
- Excessive compression ratio.
- Incorrect spark adjustment.
- Sparkplugs with incorrect heat rating or defective sparkplugs.

Measures:

Follow the specified installation instructions closely.
Check engine settings immediately after installation.